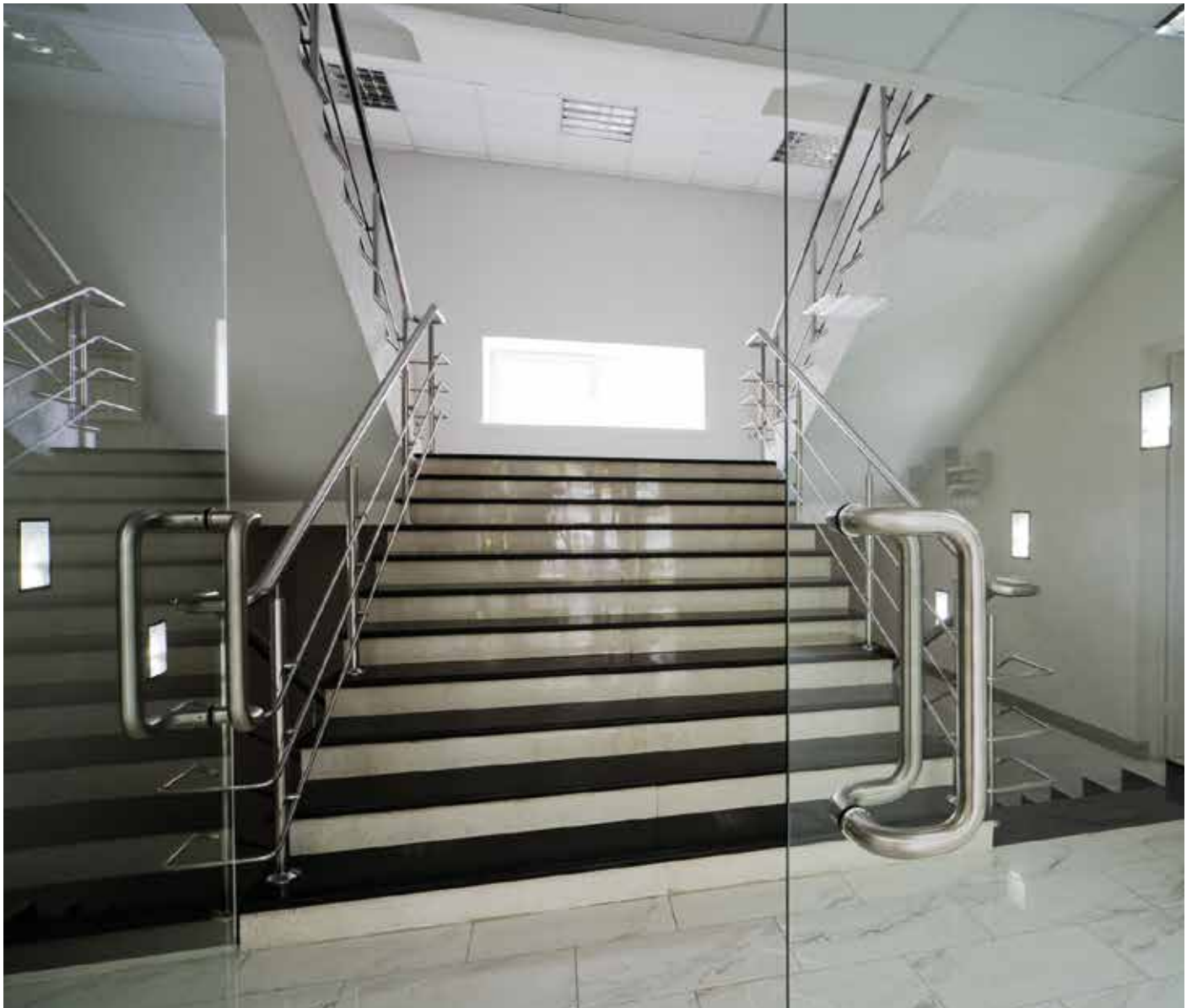


Electric strike from effeff



Strike lock, model 8037


ASSA ABLOY

For simple retrofitting on swing doors.

Experience a safer
and more open world

Strike Lock

Model 8037/8037R



Strike Lock, electric strike with latch

The Strike Lock 8037 is used as an additional locking system, particularly in the event of retrofitting. It is the ideal, smaller alternative to a holding magnet.

Features:

- Fail-unlocked
- Fail-locked optionally available
- Holding force 3,000 N / 670 lbs
- Easy installation
- Installation with L-bracket possible
- Installation on glass doors with additional adhesive panel and adhesive set
- Narrow housing

Optional:

- Monitoring contact for door status

Advantage over magnet:

- Lower power consumption
- Horizontal (FaFix electric strike or L-bracket) and vertical (latch lock 5 mm) adjustment options.
- Installation on hinge side without Z-bracket

Range of uses:

- Alternative to the holding magnet
- For retrofitting on commercial doors (e.g. adding access control)
- As a supplementary locking system for glass doors

Strike Lock, model 8037

Fail-unlocked



Strike Lock, electric strike with latch

Model 8037 is ideally suited for being retrofitted on doors.

It is the best alternative to a holding magnet; small, strong and with low power consumption.

The advantages at a glance

- Low power consumption
- Easy installation
- Installation on hinge and non-hinge side possible
- Installation on glass doors with additional adhesive panel and adhesive set possible
- Horizontal adjustment option on the electric strike and with optional L-bracket
- Vertical adjustment option on latch bolt mating component
- Narrow housing

Electrical data	12V DC	24V DC
Supply voltage	12V DC	24V DC
Rated current	240 mA	150 mA
Rated operational voltage range	+/- 10%	+/- 10%

Performance characteristics	Technical data	
Adjustable latch (FF, FaFix)	• Locking mechanism holding force	3000 N (670 lbs)
Monitoring contact (RR)	• Electric strike housing dimensions	150 x 40 x 30 mm
Diode (05)	• Latch bolt mating component dimensions	150 x 50 x 30 mm
Fail-unlocked	• FaFix regulating range horizontal	3 mm
	• Operating temperature range	-15 °C to +40 °C
	• Installation position	Vertical and horizontal
	• Material profile	Aluminium coated
	• Electric strike material	Die-cast zinc
	• Latch bolt mating component material	Die-cast zinc
	• Finish housing	Similar to RAL 9006 White aluminium

DIN directions

Universal

1

Voltage

12V DC

E9

24V DC

F9

Order No.

8037---N--91

** *

Strike Lock, model 8037R

Fail-unlocked and monitoring



Strike Lock, electric strike with latch

Model 8037 is ideally suited for being retrofitted on doors. It is the best alternative to a holding magnet; small, strong and with low power consumption.

The advantages at a glance

- Door status monitoring
- Low power consumption
- Easy installation
- Installation on hinge and non-hinge side possible
- Installation on glass doors with additional adhesive panel and adhesive set possible
- Horizontal adjustment option on the electric strike and with optional L-bracket
- Vertical adjustment option on latch bolt mating component
- Narrow housing

Electrical data	12V DC	24V DC
Supply voltage	12V DC	24V DC
Rated current	240 mA	150 mA
Rated operational voltage range	+/- 10%	+/- 10%
Switching capacity for monitoring contact	24 V / 1 A	24 V / 1 A

Performance characteristics		Technical data	
Adjustable latch (FF, FaFix)	•	Locking mechanism holding force	3000 N (670 lbs)
Monitoring contact (RR)		Electric strike housing dimensions	150 x 40 x 30 mm
Diode (05)		Latch bolt mating component dimensions	150 x 50 x 30 mm
Fail-unlocked		FaFix regulating range horizontal	3 mm
		Operating temperature range	-15 °C to +40 °C
		Installation position	Vertical and horizontal
DIN directions		Material profile	Aluminium coated
Universal	1	Electric strike material	Die-cast zinc
		Latch bolt mating component material	Die-cast zinc
Voltage		Finish housing	Similar to RAL 9006 White aluminium
12V DC	E9		
24V DC	F9		

DIN directions	
Universal	1
Voltage	
12V DC	E9
24V DC	F9
	↓ ↓ ↓
Order No.	
8037R--N--91	** *

Strike Lock, model 8037/8037R

Accessories



L-bracket for Strike Lock

L-shaped mounting bracket to install the electric strike on flush-fitted door elements on the hinge or non-hinge side.

Horizontal adjustment option when installed on the hinge side using three fixing positions on the electric strike for adjustment, e.g. rebated door.

Technical data	
Dimensions	126 x 45 x 45 mm
Material thickness	5 mm
Material	Steel
Finish	Powder-coated similar to RAL 9006 White aluminium
Feature	
L-bracket	8 0 3 7 - 3 - - - - 9 1 0 0



Spacer plate set

Spacer plate for 3 x 2 mm and 1 x 5 mm plates.

To compensate mounting tolerances between the latch and the electric strike.

Technical data	
Dimensions	126 x 50
Material thickness	2 mm and 5 mm
Material	Steel
Finish	Powder-coated similar to RAL 9006 White aluminium
Feature	
Spacer plate set	8 0 3 7 - 4 - - - - 9 1 0 0



Dressing plate Set

Self-adhesive foil to cover gluing area on glass mounting.

Consists of 2 foil and 1 cleaning towel

Technical data	
Screening panel adhesive foil dimensions	150 x 50 mm
Feature	
Adhesive set	8 0 3 7 - 5 - - - - 9 1 0 0



Adhesive plate for latch

For adhesive mounting on glass doors of the latch.

Technical data	
Adhesive plate dimensions	150 x 50 mm
Adhesive plate material thickness	5 mm
Adhesive plate material	Steel
Finish	Powder-coated similar to RAL 9006 White aluminium
Feature	
Adhesive plate	8 0 3 7 - 6 - - - - 9 1 0 0

Adhesive Set

Two-component Glue consist of glue and activator
Gluing without mixing the two-complement
(Glue and activator)

Adhesive works for 6 Sets 8037.

6 pieces of cleaning towels are included as accessories.

Feature	
Adhesive Set	7 6 0 - R K 1 5 0 0 - - - 0 0

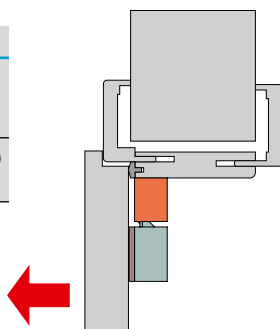
Model 8037/8037R

Mounting examples

This overview depicts the most common forms of installation, including a list of all the necessary products.

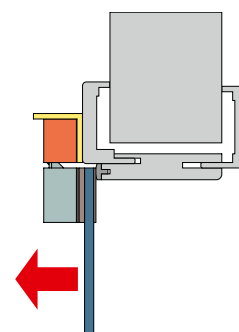
Non-hinge side installation
(header mounting)

The following are required:
8037---N--91E91/F91 or 8037R--N--91E91/F91
8037-4-----9100 (optional)



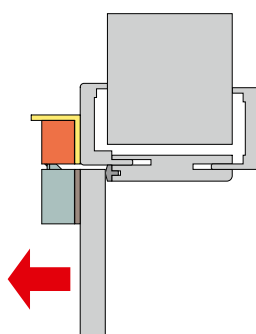
Hinge side installation
glass door

The following are required:
8037---N--91E91/F91 or 8037R--N--91E91/F91
8037-3-----9100
8037-4-----9100
8037-5-----9100
8037-6-----9100
760-RK1500---00



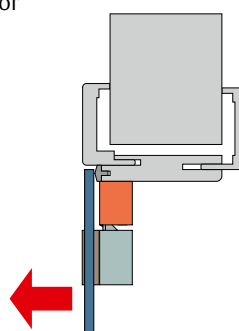
Hinge side installation,
flush-fitted

The following are required:
8037---N--91E91/F91 or 8037R--N--91E91/F91
8037-3-----9100
8037-4-----9100 (optional)



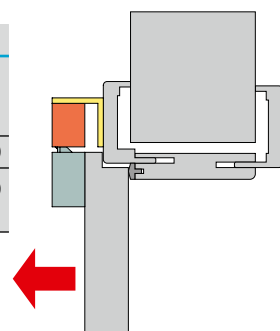
Non-hinge side installation
(header mounting) glass door

The following are required:
8037---N--91E91/F91 or 8037R--N--91E91/F91
8037-4-----9100 (optional)
8037-5-----9100
8037-6-----9100
760-RK1500---00



Hinge side installation,
rebated door

The following are required:
8037---N--91E91/F91 or 8037R--N--91E91/F91
8037-3-----9100
8037-4-----9100 (optional)



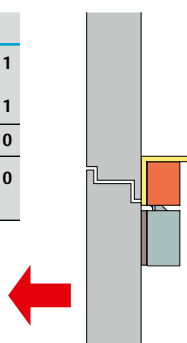
Hinge side installation
glass door with glass panel

The following are required:
8037-----91E91/F91 or 8037R-----91E91/F91
8037-3-----9100
8037-4-----9100 (optional)
8037-5-----9100
8037-6-----9100
760-RK1500---00



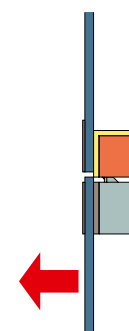
Non-hinge side installation,
flush-fitted

The following are required:
8037---N--91E91/F91 or 8037R--N--91E91/F91
8037-3-----9100
8037-4-----9100 (optional)



Non-hinge side installation
glass door with glass panel

The following are required:
8037---N--91E91/F91 or 8037R--N--91E91/F91
8037-3-----9100
8037-4-----9100 (optional)
8037-5-----9100
8037-6-----9100
760-RK1500---00



Order form

Please copy formular, complete and fax
it back to ASSA ABLOY!



Customer-No.:
Address:

Company

Branch

Contact

Telephone

Fax

Email

Street / POB

Postal Code / Town

ASSA ABLOY
Sicherheitstechnik GmbH

Bildstockstraße 20
72458 Albstadt
GERMANY
Tel. +49 7431 123-700
export.effeff@assaabloy.com

Order Date:

Order Number	Pce.

Urgent orders can also
be placed via email:

As a proven supplier of door release systems, ASSA ABLOY is known for reliable and prompt deliveries. We offer you two methods of ordering: You can fax us the completed form or send us details of your requirements via email to the following address: **export.effeff@assaabloy.com**

Quotations and deliveries are made in accordance with our conditions of delivery and payment.

The ASSA ABLOY Group is the global leader
in access solutions. Every day we help
people feel safe, secure and experience
a more open world.

ASSA ABLOY
Opening Solutions

ASSA ABLOY
Sicherheitstechnik GmbH
Bildstockstraße 20
72458 Albstadt
GERMANY
albstadt@assaabloy.com
Tel. +497431 123-700
www.assaabloy.com/de

© ASSA ABLOY | We reserve the right to make technical modifications.
2.1901-160 060 05_03/22